



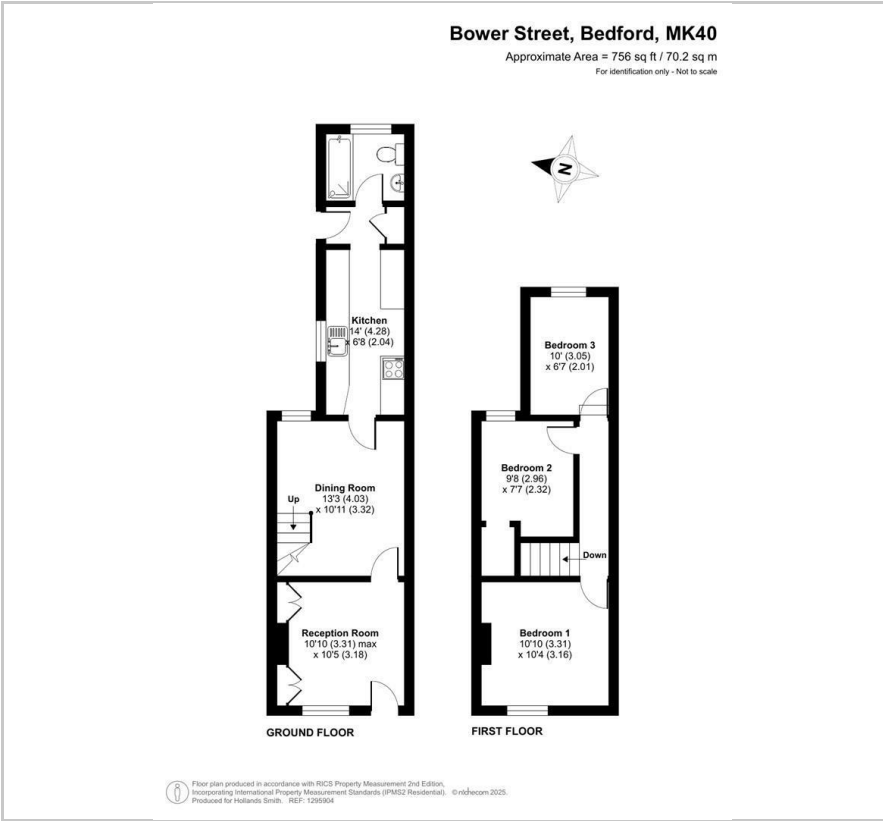
29 Bower Street

, Bedford, MK40 3RD

Price Guide £310,000



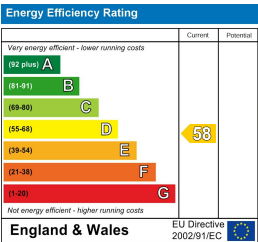
Floor Plan



Area Map



Energy Efficiency Graph



Viewing

Please contact our Bedford Office on 01234 216612 if you wish to arrange a viewing appointment for this property or require further information.

- Freshly Decorated Period Home
- Three Bedrooms
- Close to Park
- Sitting & Dining Rooms
- Kitchen & G/F Bathroom
- Good Sized Rear Garden
- Gas Radiator Heating
- Replaced uPVC Double Glazing
- No Onward Chain
- Close to Coffee Shops, Delis & Restaurants

This period terraced home lies just a few yards from Russell Park and is within a short stroll of the range of amenities on the bustling Castle Road. The freshly decorated accommodation features new carpets throughout and is available with no onward chain. There are separate sitting and dining rooms, a kitchen, three bedrooms and a ground floor bathroom. The easily maintained rear garden is deeper than most within the area. Popular with individuals and families alike the 'Castle Quarter' offers a range of independent coffee shops, delis and restaurants as well as a highly rated primary school.

EPC Rating: D Council Tax Band: C

Well maintained and presented, the property features gas radiator heating and uPVC double glazing throughout. Russell Park is on the doorstep with the picturesque Embankment and attractive river walks beyond.



163 Castle Road, MK40 3RT

Tel: 01234 216612
www.hollandsmith.co.uk

These particulars are believed to be accurate but are not guaranteed to be so. They are intended only as a general guide and cannot be constructed as any form of contract, warranty or offer. No apparatus, equipment, fittings or services have been tested and so we cannot verify that they are in working order. The details are issued on the strict understanding that any negotiations in respect of the property are conducted through Hollands Smith Estate Agents and Valuers.